

Lasso for GenAI Chatbots

Gain control over GenAI chatbots, applications, and tools in your organization

86% of IT leaders expect generative AI to soon play a prominent role in their organizations.

In an era where traditional security and data protection measures fall short in safeguarding GenAI and Large Language Models (LLMs), the organization deserves a new security approach.

Secure every GenAI interaction with 'Lasso for GenAI Chats' browser extension

Lasso Security is an easy-to-install Browser Extension, provides organizations with a holistic view and comprehensive protection of GenAI usage in under 10 minutes from installation.

The solution sits between the apps and employees, monitoring every data movement. Its unique LLM features - Always-on Shadow LLM™, real-time monitoring, and customized policy enforcement, oversee and prevent any unauthorized activities of disclosure of sensitive information and knowledge, intellectual property, PII, IP, and more.

Check all GenAI Security Boxes with Lasso Security

- ✓ Content Anomaly Detection
- ✓ Insecure Output Handling
- ✓ Prompt Injection Detection
- ✓ Privacy and Data Protection
- ✓ Hallucination Detection
- ✓ Supply-Chain Vulnerabilities
- ✓ GenAI Application Security
- ✓ AI Compliance

Key Benefits

Always-on Shadow LLM™

Continuously discover and monitor use of GenAI tools and chatbots within your organization

Fully Tailored Policy Enforcement

Customize your defenses, perfectly fitting your organization's security and compliance needs

Real-time Proactive Remediation

Block any information that may put your organization at risk in real-time



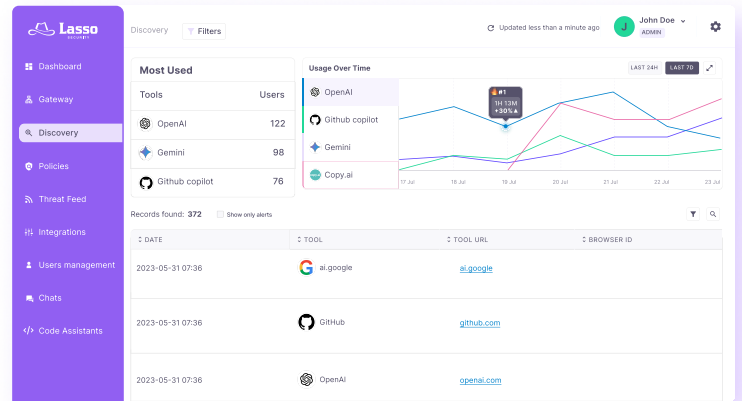
Go Beyond Legacy Security Tools

Monitor Every Data Movement in Minutes



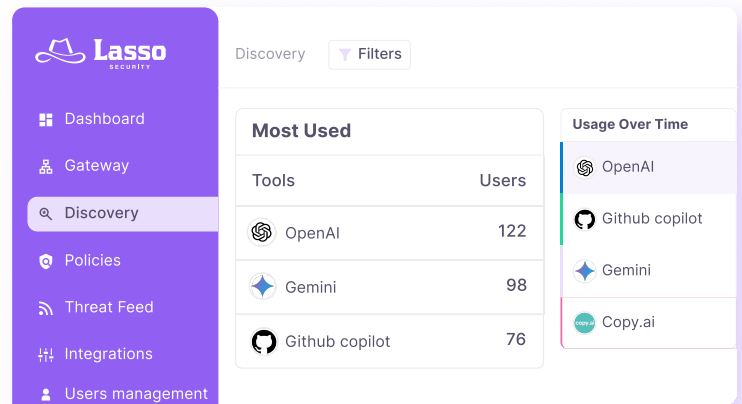
Easy Onboarding and Integration

Under 5 minutes quick deployment of browser extension on any desired stations. Start monitor online GenAI use in a click of a button.



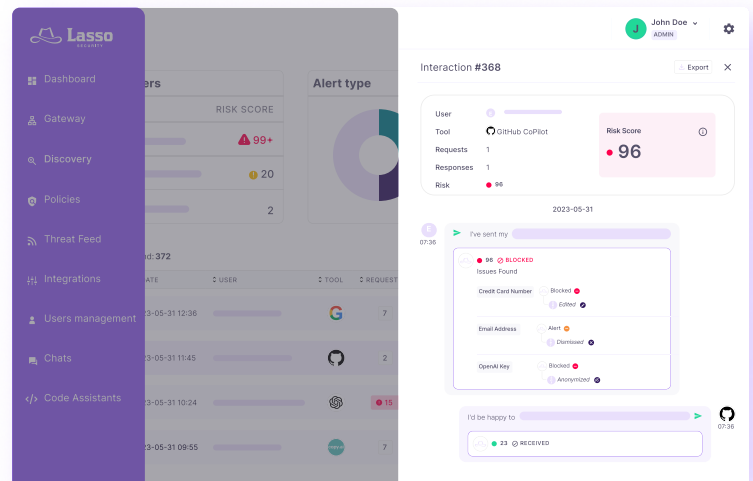
Always-on Shadow LLM™

When an employee interacts with any of the supported tools (such as chatGPT, Gemini and more), the Lasso for GenAI Chats monitor is activated.



Real time Response and Automated Mitigation

A popup alert appears on the violator's screen, detailing the infraction and blocking the session until it is resolved, without bothering the security teams. A real time security alert appears on the admin's dashboard, and a log is created, allowing full visibility, and risk analysis.



Effortless Security Policy Management

No coding, development or data science expertise is required. Apply out of the box security policy in a click of a button.

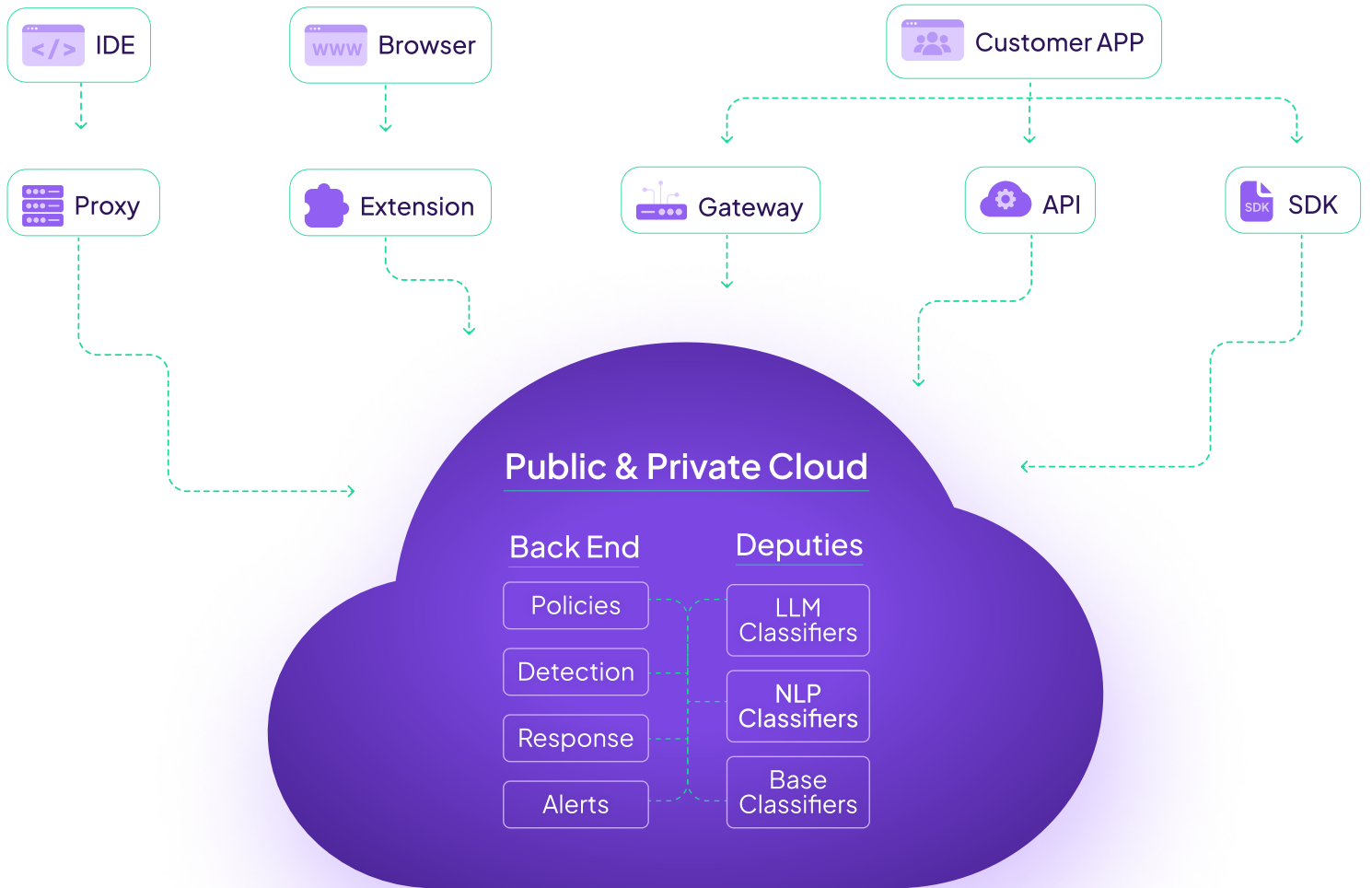
The screenshot shows the 'Manage Data Classes' section in the Lasso Security interface. It displays a table of data classes with their respective severity levels and actions.

DATA TYPE	DATA CLASS	SEVERITY	ACTION	ENABLE
Credit Card Number	PCI	HIGH	BLOCK	ON
AWS Access Token	Token	HIGH	BLOCK	ON
Bitcoin Address	Pi	LOW	BLOCK	ON

[Download Lasso for GenAI Chatbots](#)

Next-Level Security for the GenAI Era

Lasso's suite sits between the LLMs and data consumers, including internal teams, employees, software, models, as well as external user-facing applications. No matter the deployment style, Lasso monitors every touchpoint where data moves to or from the LLM, detecting anomalies or violations of organizational policy.



Lasso Security is a pioneering comprehensive Large Language Models (LLMs) cybersecurity solution that is committed to addressing the evolving threats and challenges that businesses are beginning to encounter with Generative AI and LLMs at every touchpoint within their organizations.

Lasso is on a mission to help businesses deploy Generative AI successfully while ensuring the security of commercial data and the privacy of customers and employees.

Partnered with world-leading vendors

